

**DRAUGHTSMAN CIVIL
(PRACTICAL)
SEMESTER-II**

TIME : 8 Hrs.

MARKS: 270

Note:-Attempt both questions.

1. Draw a detailed plan, section along A-B-B1-C and front elevation for a suitable scale of a single storey building line diagram shown below for the following data. Assume any suitable missing data. (250)

Wall thickness - 230 mm

Basement wall thickness 400mm and height of 600mm

Depth of foundation below ground level 700mm.

Provide two footings of width 500mm and 600mm.

C.C(1:4:8) bed of size 800mmx300mm.

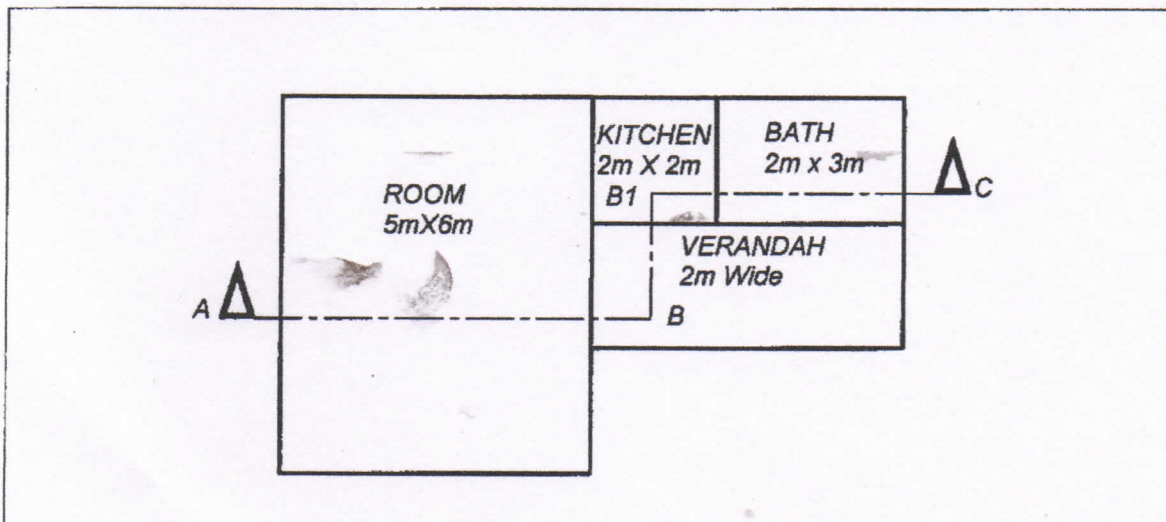
Height of single storey 3.1m, parapet wall thickness 100mm and height 600mm.

RCC Slab thickness 150mm with a finish of 50mm

Flooring consists of 100mm cement concrete laid over 100mm sand filling. 40mm floor finishing material at the top.

Provide suitable number of doors of each size 1.2mx2.1m and windows of each size 1.1mx1.2m at suitable locations.

Provide lintel over openings of doors and windows having thickness 150mm with a sunshade projection of 600mm



2. Write short notes on Ear15 Quake Resistance building.

(20)
